

**TF100D/150D/200D**  
**HAND-HYDRAULIC TABLE TRUCK**



**Operating Manual**

## ! WARNING

1. Read and understand the owner's manual before assembly and operation.
2. Do not load scissor lift beyond its rated capacity.
3. Do not allow people to sit or ride on scissor lift.
4. Secure load before raising or moving scissor lift
5. Do not transport loads in the raised position.
6. Use only on smooth finished floors.
7. Pull release lever slowly to allow load to descend in a controlled manner.
8. Keep hands and feet clear of table when lowering load.
9. Failure to comply with the above warnings may result in personal injury and/or property damage.

## SPECIFICATIONS

Model	TF100D	TF150D	TF200D
Load Capacity (kg/lbs)	1000/2200	1500/3300	2000/4400
Table Size L × W (mm/in)	1200×610/47¼×24	1200×610/47¼×24	1200×610/47¼×24
Maximum Height (mm/in)	1000/39¾	000/39¾	000/39¾
Minmum Height (mm/in)	380/15	380/15	380/15
Net Weight (kg/lbs)	165/363	180/396	195/429
Packing Dimensions (mm/in)	1400×620×400	1400×620×400	1400×620×400
	55×24½×15¼	55×24½×15¼	55×24½×15¼

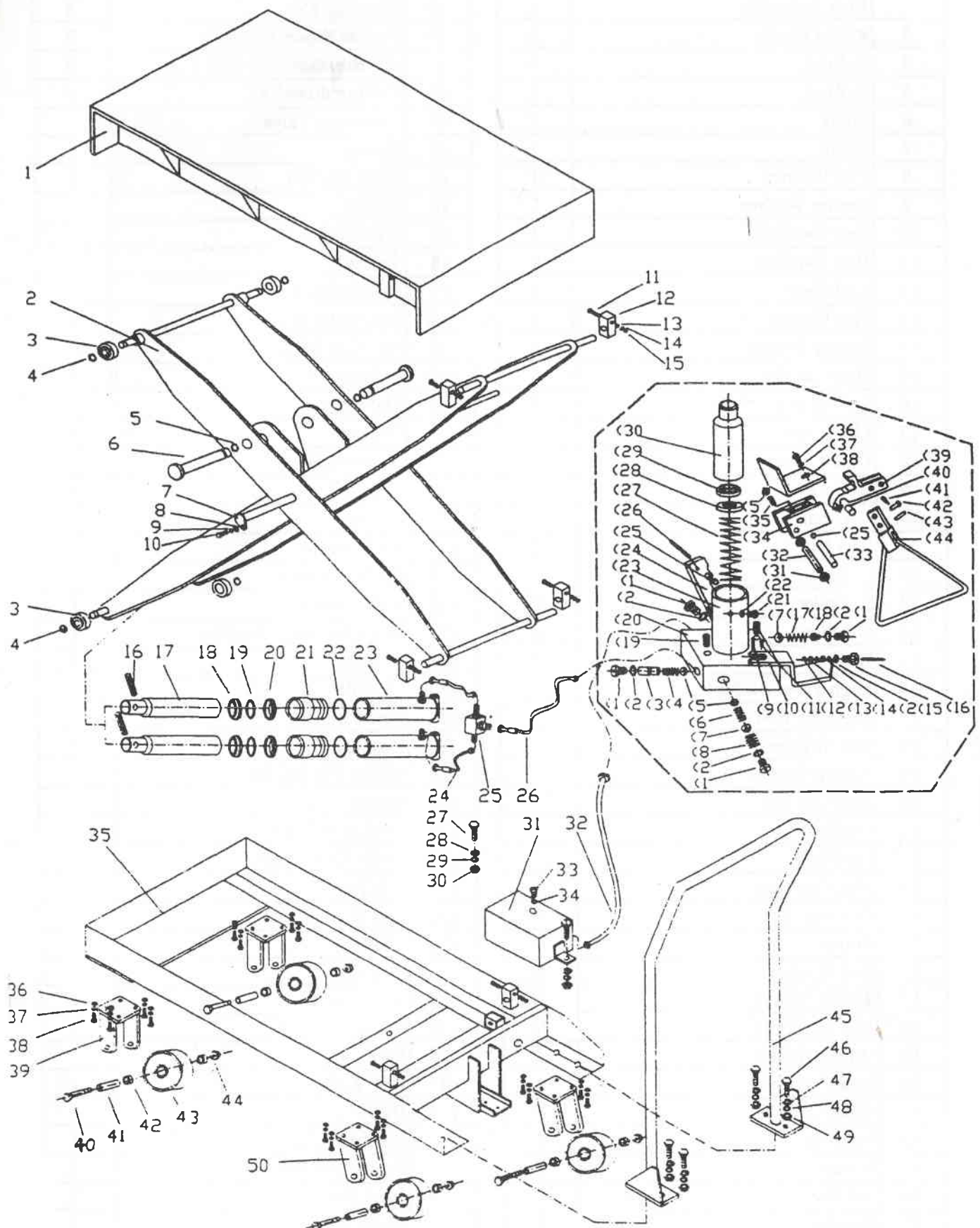
## ASSEMBLY

Draw up the Foot Pedal (44, and then insert the Shaft (42 into the hole on the Pressure Block (39, at last insert the Lock Pin (41 into the head hole of the Shaft (42.

## OPERATION

1. Pumping the Foot Pedal (44 to lift the table. When the table truck is unload, draw back the Block (38 and joint with the Pressure Block (39, at this rate the truck can be lifted quickly. When the table truck is load, asunder the Block (38 and the Pressure Block (39, at this rate the truck can lift the table with heavy goods easily.
2. To lower the table, slowly pull the Discharge Block (10.
3. Before Loading, always lock the caster brake.

# TF100D/150D/200D HAND-HYDRAULIC TALBE TRUCK



# TF100D/150D/200D HAND-HYDRAULIC TABLE TRUCK

No.	Descriptions	Q'ty
1	Table	1
2	Link Assembly	1
3	Roller Guide	4
4	C-Ring	4
5	C-Ring	2
6	Shaft	2
7	Shaft	1
8	Flat Washer	1
9	Spring Washer	1
10	Hex Cap Bolt	1
11	Hex Cap Bolt	4
12	Link Seat	4
13	Flat Washer	4
14	Spring Washer	4
15	Hex Cap Nut	4
16	Spring Pin	2
17	Lift Piston	2
18	Dust Cover	2
19	O-Ring	2
20	Oil Seal	2
21	Top Nut	2
22	O-Ring	2
23	Cylinder	2
24	Oil Pipe	2
25	Oil Pipe Joint	1
26	High Press Oil Pipe	1
27	Hex Cap Bolt	2
28	Flat Washer	2
29	Spring Washer	2
30	Hex Cap Nut	2
31	Oil Box	1
32	Oil Pipe	1
33	Hex Cap Plug	1
34	O-Ring	1
35	Frame	1
36	Flat Washer	16
37	Spring Washer	16
38	Hex Cap Bolt	16
39	Wheel Holder	2
40	Hex Cap Bolt	4
41	Shaft Cover	4
42	Bearing	8
43	Wheel	4
44	Set Nut	4
45	Handle	1
46	Hex Bolt	4
47	Flat Washer	4

No.	Descriptions	Q'ty
48	Spring Washer	4
49	Hex Cap Nut	4
50	Swivel Wheel Holder	2
(1	Air Breather M14×1.5	4
(2	O-Ring Φ16×2.4	5
(3	Lowering Valve	1
(4	Spring	1
(5	Steel Ball Φ8	2
(6	Spring	1
(7	Steel Ball Φ10	2
(8	Spring	1
(9	Spring Pin Φ5×16	1
(10	Discharge Block	2
(11	Hex Cap Screw	1
(12	C-Ring Φ7	1
(13	Flat Washer	1
(14	O-Ring	1
(15	Air Breather	1
(16	Top Rod	1
(17	Spring	1
(18	Air Breather	1
(19	Fix Screw Post	1
(20	Valve Block	1
(21	Hex Cap Screw PostM6	1
(22	Washer	1
(23	Cylinder	1
(24	Fixed Block	1
(25	Bushing	2
(26	Spring Pin Φ6×40	1
(27	Spring	1
(28	UHS25 Oil Seal	1
(29	DH25 Dust Cover	1
(30	Lift Piston	1
(31	Flat Washer	2
(32	Shaft(1)	1
(33	Shaft(2)	1
(34	Joint Block	1
(35	Spring	1
(36	Screw Post	1
(37	Flat Washer	1
(38	Block	1
(39	Pressure Block	1
(40	Pressure Guide	1
(41	Lock Pin	1
(42	Shaft(3)	1
(43	Shaft(4)	1
(44	Foot Pedal	1